



**PARENT & CARER INFORMATION**





# MESSAGE

## FROM THE PRINCIPAL

At the beginning of 2024, Aspley Special School will provide educational programs for 130 students aged between 11 and 18 years of age with an intellectual disability.

The student catchment area is geographically very large, spreading from the inner city to Eatons Hill, Sandgate and Bracken Ridge.

The school is unique in that it is one of only a few special schools in Queensland that provides programs only for secondary aged students with disability. This uniqueness has enabled the school to develop and maintain a focus on learning experiences tailored to preparing students for post-school life. As such, all programs are centred on ensuring students are ready to transition into the broader community as independently as their capability enables.



## OUR PURPOSE

*Learning for Life*

For our students to extend their ability and readiness to engage in personally meaningful life activities as content, valued members of the broader community.

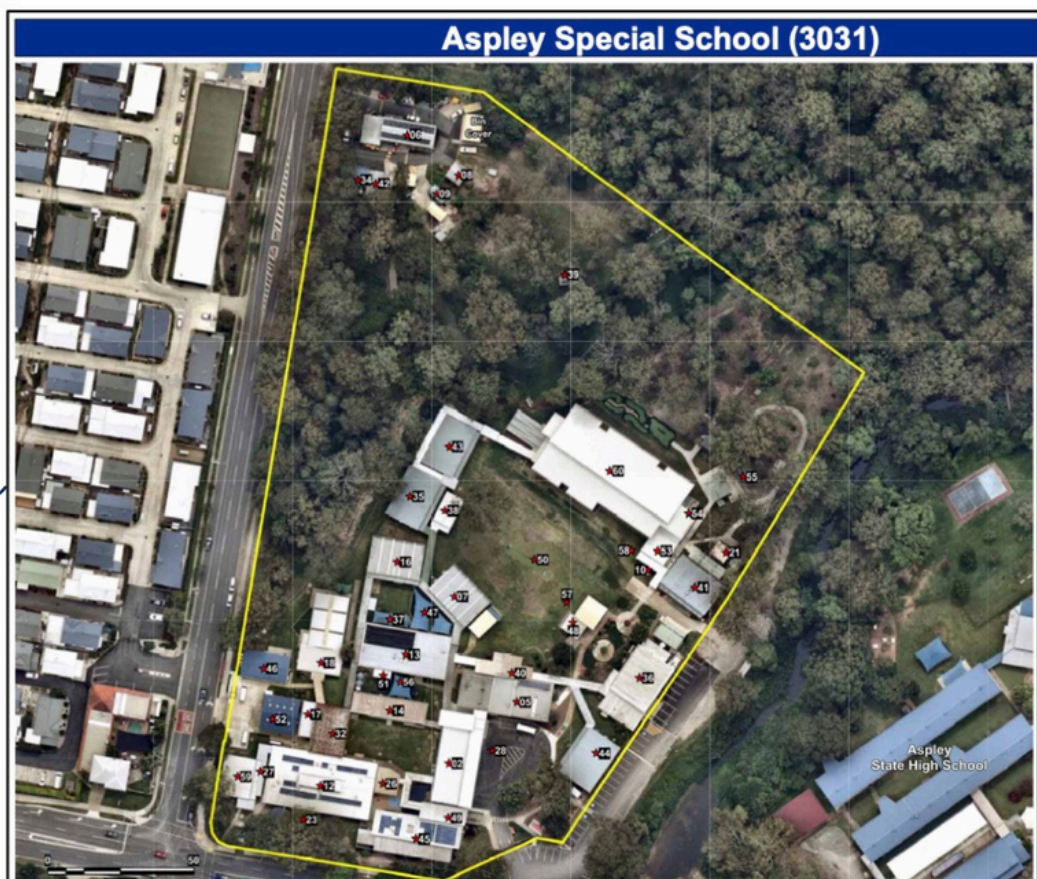




# OUR SCHOOL

Secondary Yr 7-12

Hours 8:30am-2:45pm



# OUR LEADERSHIP TEAM

## MONDAY



Cher



Kath



Vanessa



Trish



Dom

## TUESDAY



Kath



Vanessa



Jayson



Trish



Dom

## WEDNESDAY



Cher



Kath



Jayson



Trish



Dom

## THURSDAY



Kath



Vanessa



Jayson



Trish



Dom

## FRIDAY



Cher



Kath



Jayson



Trish



Vanessa

Principal

DP

HOD: C





## SCHOOL UNIFORM

- Navy shorts
- Dress polo shirt
- Hat
- School jumper or navy blue tracksuit
- Enclosed shoes and socks

Uniforms can be ordered via Qkr and the uniform shop is open most Tuesday afternoons 1-2pm.

## SCHOOL TUCKSHOP

The tuckshop operates each Tuesday, as part of the Home Economics and Living Skills program.

Students must place orders in the tuckshop before 9am each Tuesday.

Parents and carers can place tuckshop orders using the Qkr app by 8:30am of the same day. An updated price list is provided each term for your convenience.

The tuckshop usually begins operation to the school in approximately week 4, Term 1 each year.



with MasterPass

Download on the  
App Store

GET IT ON  
Google Play

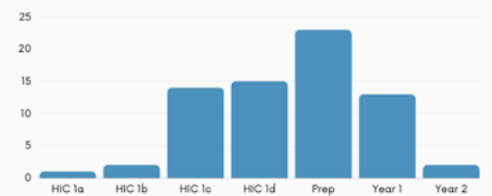


# CURRICULUM

## ENGLISH



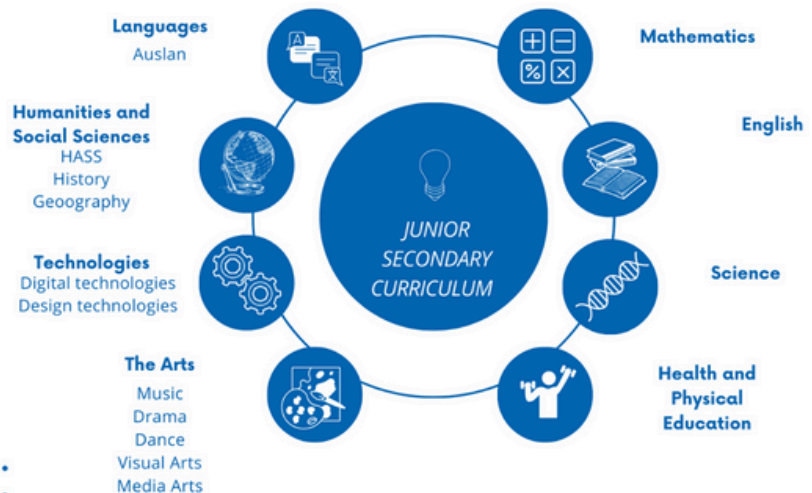
HIC VS DYLP learners



Distribution of learners across HIC and DYLP

## OUR JUNIOR CURRICULUM

The Junior Secondary School curriculum in Year 7-9 is structured around the learning areas of the Australian Curriculum and is heavily influenced by the student's Individual Curriculum Plan (ICP). The development of Communication skills and Personal and Social capabilities are embedded into all learning areas and are considered priority learning goals for all students.

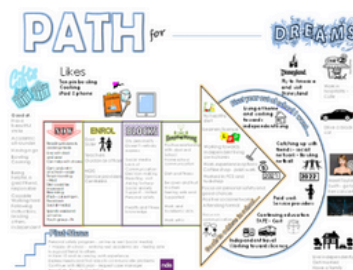






# OUR SNR CURRICULUM

Our Senior School curriculum is driven by each student's Senior Education Training (SET) plan and Planning Alternative Tomorrows with Hope (PATH) plan and is organised around six learning areas. These learning areas are also aligned to the curriculum organisers from the student's Queensland Certificate of Individual Achievement (QCIA).



# OUR PROGRAMS

## Horticulture programs

**Year 10-12 students**

Certificate 1: Agriculture

**Year 7-12 students**

Horticulture

Stephanie Alexander Kitchen Garden

Recycling

Community composting





# OUR PROGRAMS

## Hospitality programs

**Year 10-12 students**

Certificate 1: Hospitality

- Tuckshop
- Hospitality classes

**Year 7-9 students**

Simple meal preparation

Design technologies



# OUR PROGRAMS

**Industrial Technology and Design -  
woodwork**

**Digital technologies**

**Arts**

**TAFE**

**Cert 1: Active Volunteering**





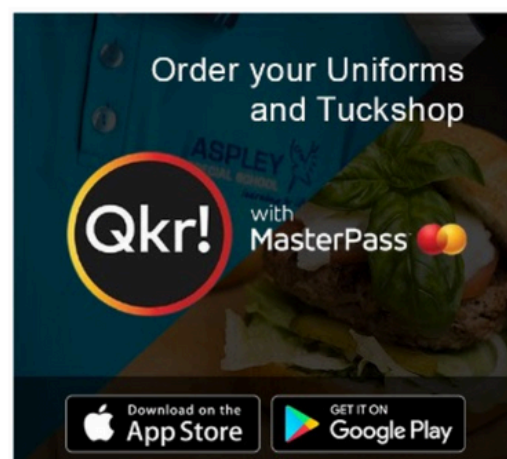
# EVENTS



# PARENT CONTRIBUTIONS

**Student Resource Scheme (SRS) \$300/year (3 x \$100 terms)**

- Electronic materials and software
- Online subscriptions
- Equipment for Life Skills and Stationery
- Equipment for specialist subjects
- Photocopies of class notes and worksheets, workbooks
- Borrowing of books and class sets of various resources and materials.







# OUR FACILITIES

- Kingfisher Recycling Centre
- Home Ec kitchen and industrial kitchen
- Heated pool, bike track & gym
- Gardens - Stephanie Alexander Kitchen Garden, orchard & Community composting
- Playgrounds
- Putt-putt & Chicken coup
- Music & drumming room
- Air conditioned hall



## ENROLMENT PROCESS

### 2024

- Contact current school to discuss intentions for 2024.
- Contact Aspley Special School to discuss enrolment.
- Once enrolment has been approved, we will contact you via email.
- In Term 4, we will organise another parent day to sign paperwork and organise uniforms. (e.g. enrolment forms, transport applications)

### 2025

- Meet and greet in student free days in January





## OUR PBL FOCUS

The Rule of 5 provides the reference point for behavioural expectations, recognition and correction. Our rules are explicitly taught and reinforced during assembly, through our Wheel of 5 acknowledgement, in classrooms and in different contexts.



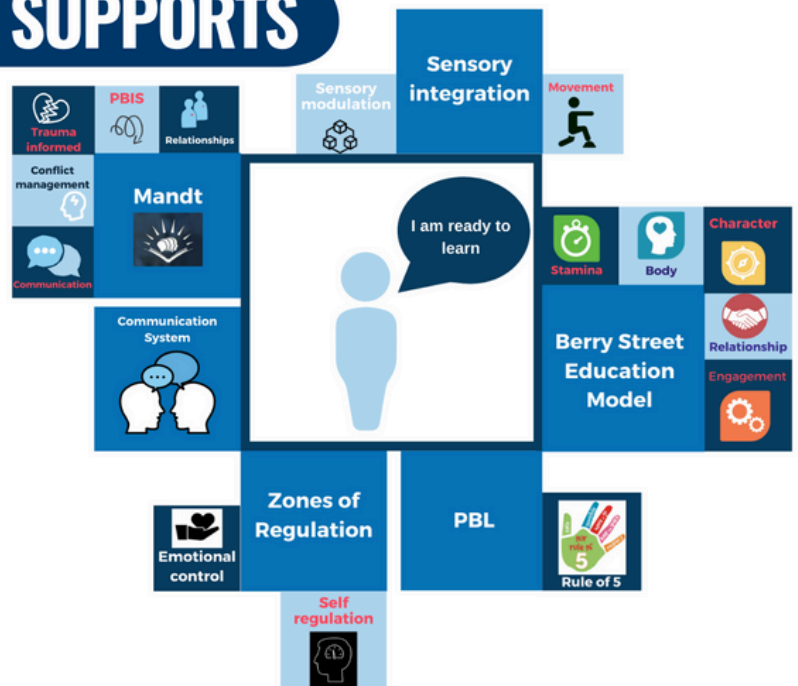
## RULE OF FIVE

### BEHAVIOUR SUPPORT



## STRATEGIES AND SUPPORTS

*Being Ready to learn*



**Aspley Special School**  
**751 Zillmere Road, Aspley Q 4034**  
**07 3867 2333**  
**[admin@aspleyspecs.eq.edu.au](mailto:admin@aspleyspecs.eq.edu.au)**

**[www.aspleyspecs.eq.edu.au](http://www.aspleyspecs.eq.edu.au)**

